

Hamilton Park Plaza

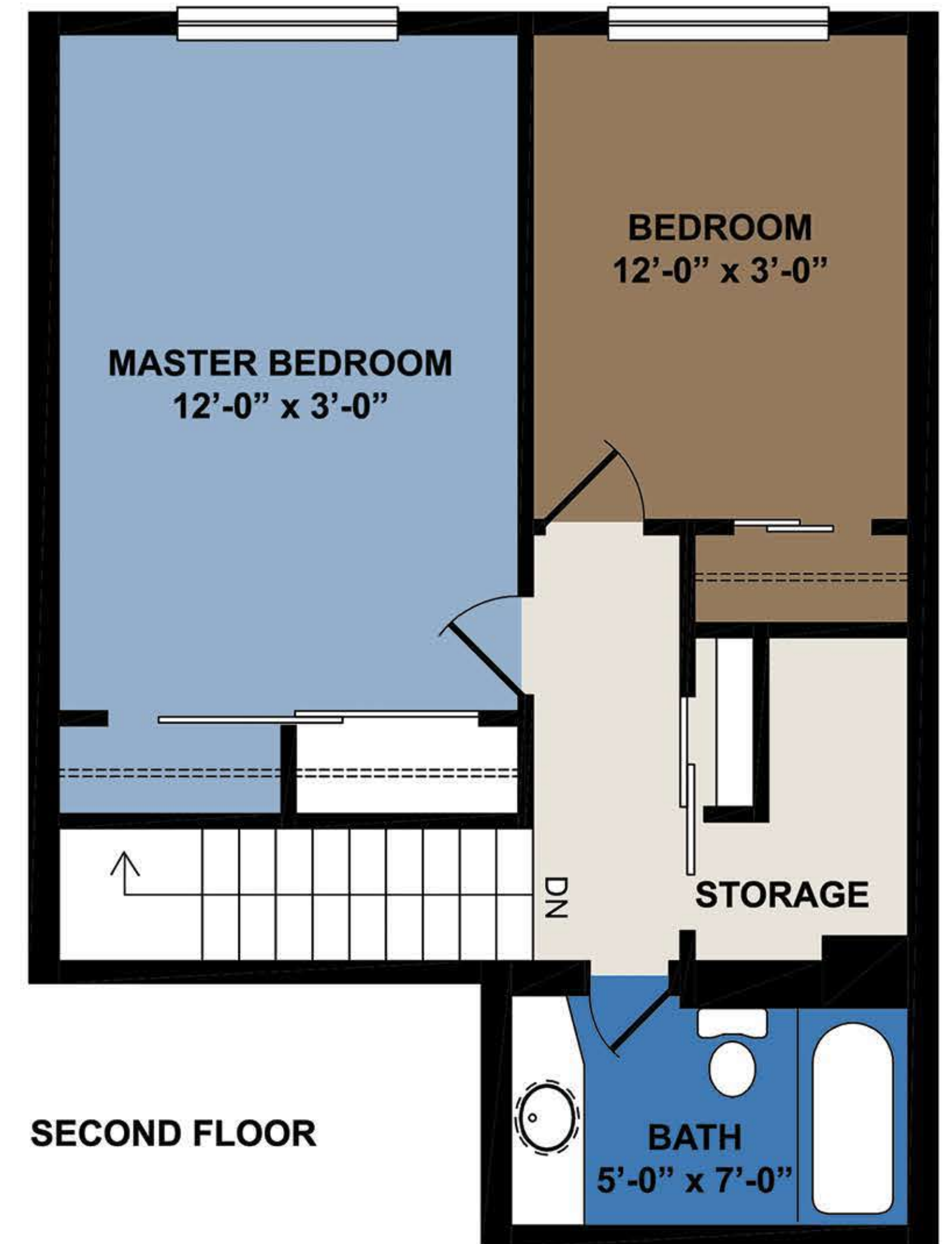
838, 262,278 Cavalier Drive and 302 Hamilton Avenue, Winnipeg, Manitoba, R2Y 1Z9

TYPE 1C
859 sqft
2 Bedroom with Balcony

- Open concept living and dining room area
- Carpet and vinyl flooring
- Sound proof floors, walls and ceiling
- Perimeter radiant heating
- Air conditioning
- Fridge and stove
- Ample in suite storage
- 2 floors
- 1 and a 1/2 bathrooms
- CCTV security entrance



MAIN FLOOR



SECOND FLOOR